

Lcdmod Kit

C0AA-S1

Perspex mini-itx case
(Designed for Intel® Atom™ Processor)

User Manual

Website: <http://www.lcdmodkit.com>

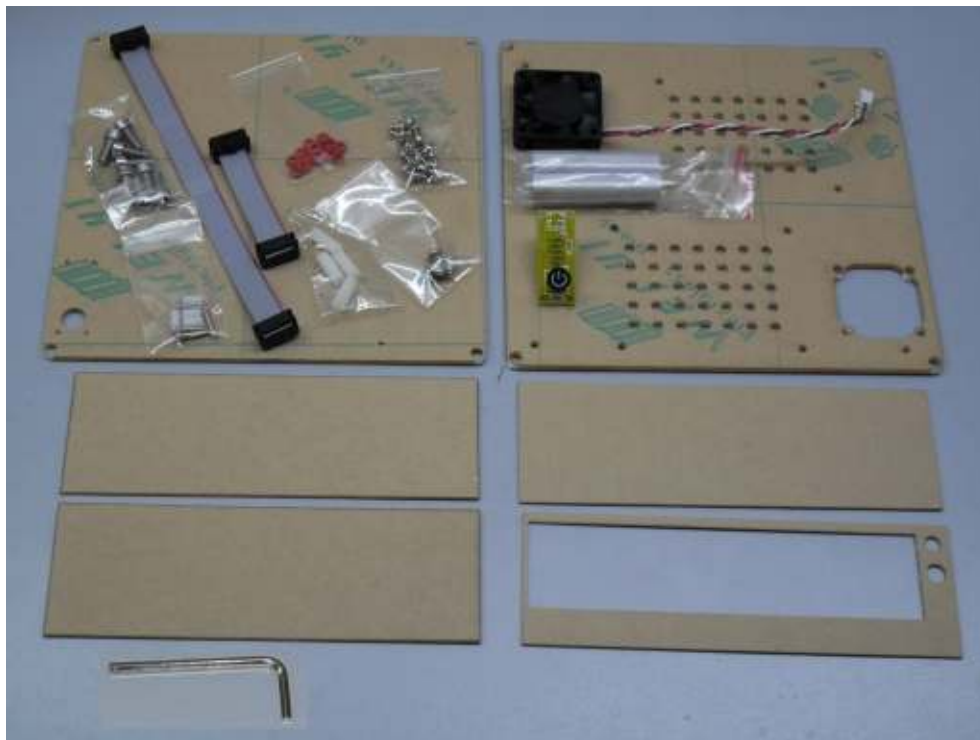
Rev: 1.01 Dec 2010

CHAPTER 1 INTRODUCTION..... 2

CHAPTER 2 HARDWARE SETUP 2

Chapter 1 Introduction

1.1 Package Contents



1.2 Specification

| Case | |
|-----------------|-------------------------------------------------------------------------------------------|
| Case Color | No color crystal clear (Acrylic) |
| Corner Stand | 56mm height Silver White (Surface treated sandblasted aluminium) |
| Foot Stand | M5 Screw (Aluminium , 4.5mm height) |
| Dimensions | 185 x 181 x 62mm (WxLxH, box height only, not included the height of food stand) |
| HDD Bays | [2x] 2.5" HDD (under the motherboard) |
| Foam Factor | mini itx |
| Internal Height | Total 56mm (15 - 17mm under main board, 1.5mm main board, 39.5 – 37.5mm above main board) |

Chapter 2 Hardware Setup

2.1 Installing hard disk to the bottom crystal clear plate

2.1.1 Place red fiber liners on mounting holes of hard disk



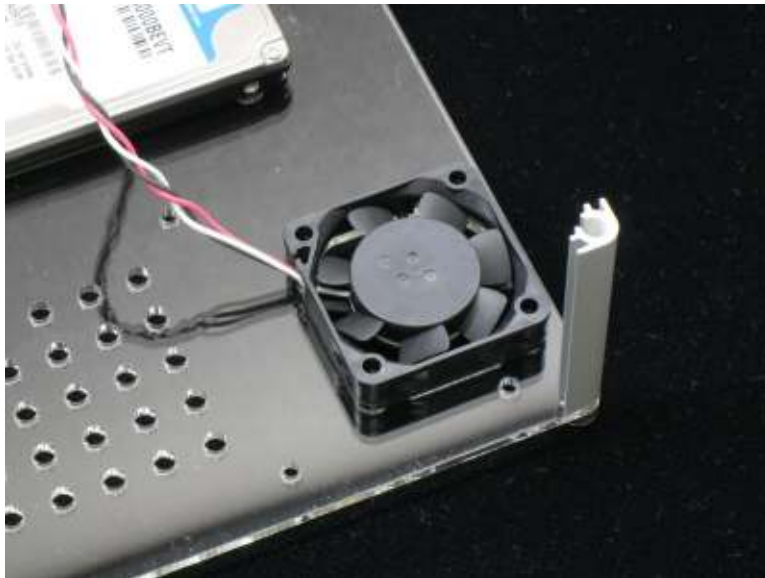
2.1.2 Place bottom crystal clear plate on the top of hard disk and install screws
(If you only use one hard drive, please cover the exhausted holes of the another drive bay)



2.2 Installing corner stands to the bottom crystal clear plate



2.3 Exhausted fan installation



Please remind the arrows sign which marked on the fan, the air flow arrow point to outward.

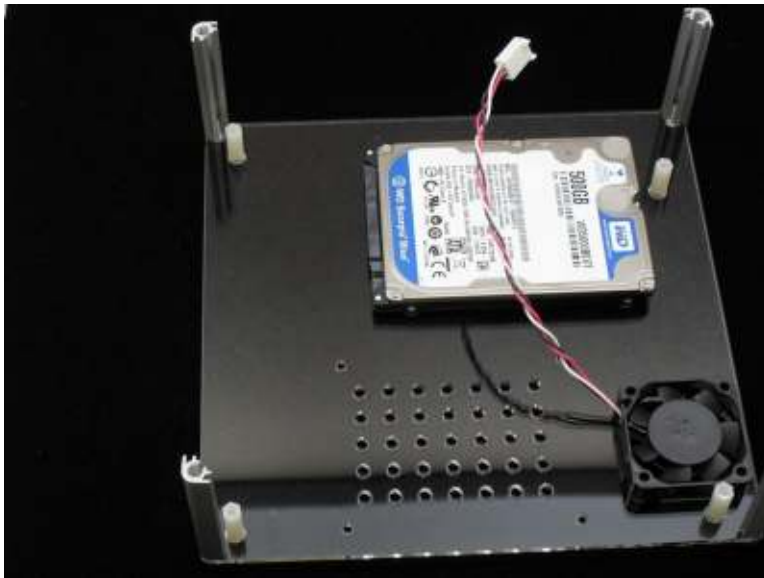


2.4 Installing nylon studs on the bottom crystal clear plate

No use of red fiber liner, studs height is 15mm.

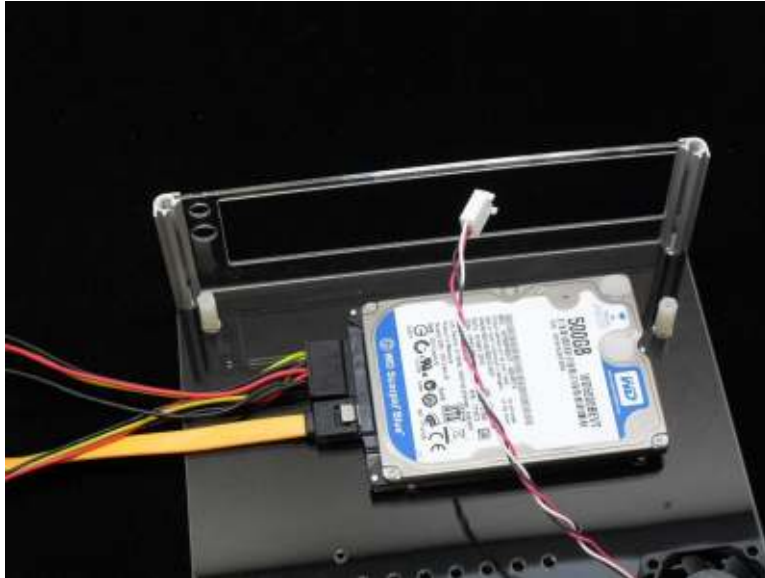
Use 4 pieces 1 mm thickness red fiber liner can adjust studs height to 16mm.

Use 8 pieces 1mm thickness red fiber liner can adjust studs height to 17mm.



2.5 Connecting SATA data and power cables

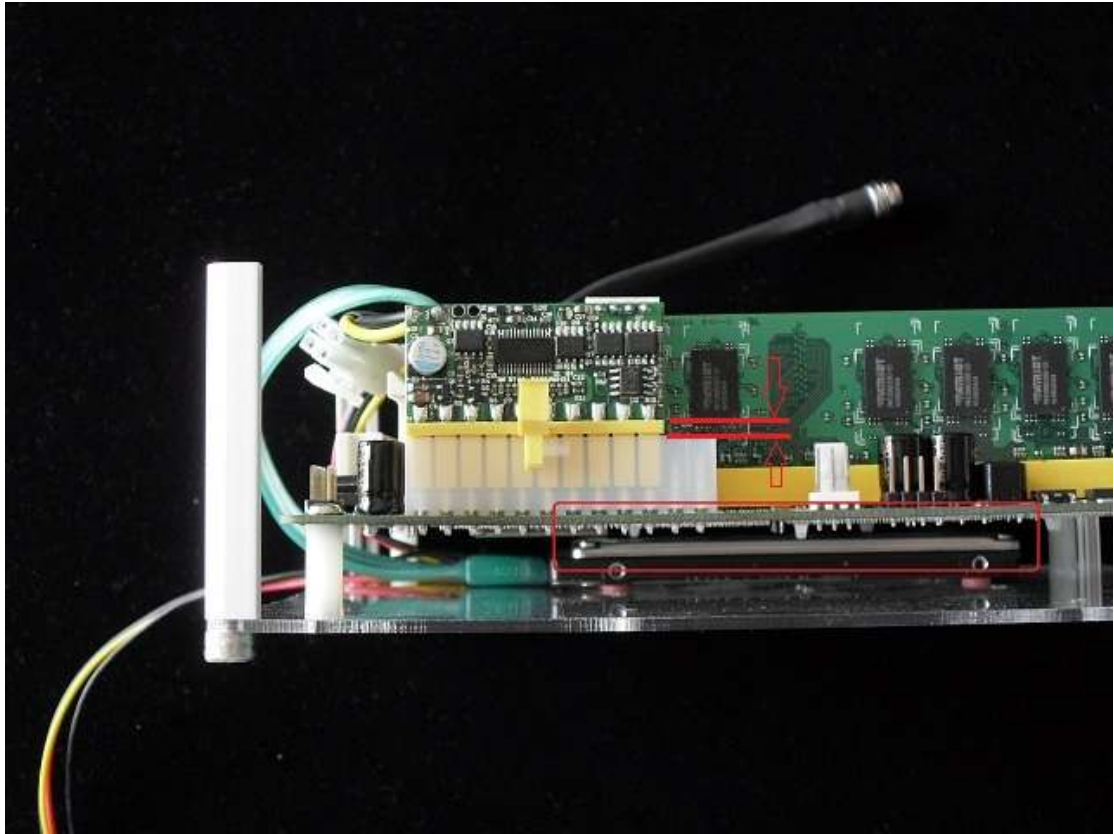
2.6 Insert the rear crystal clear plate.



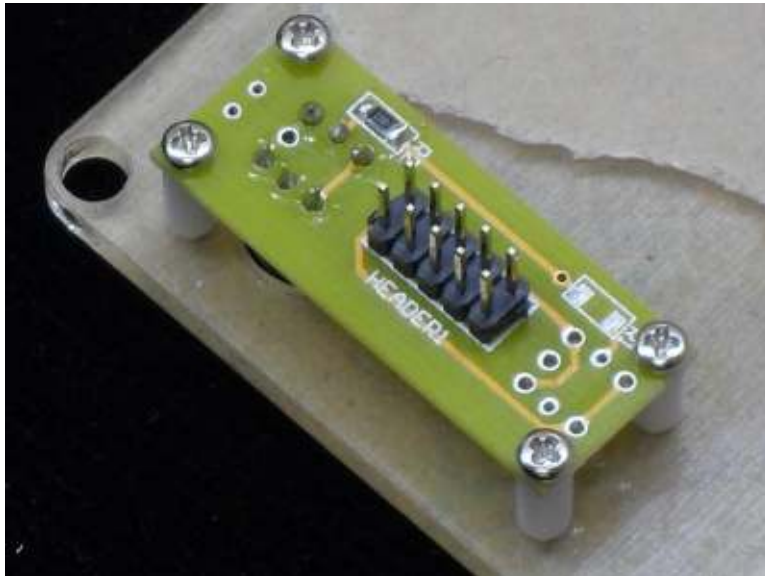
2.7 Installing Mainboard and power cable and Wifi connector (if you have)



Make sure no contact between motherboard and harddisk. Use low profile type power supply.



2.8 Install the power button module (Rotate the screw lightly and make sure the button can be pressed and released freely)



2.9 Installing front/right side/ crystal clear plat

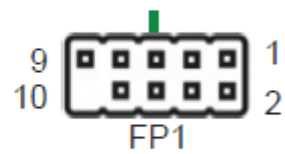


2.10 Connecting ON/OFF switch cable (we provide one short and one long cable, please choose the suitable one for your mainboard)

2.10.1 Main board side

FP1-Pin Definition

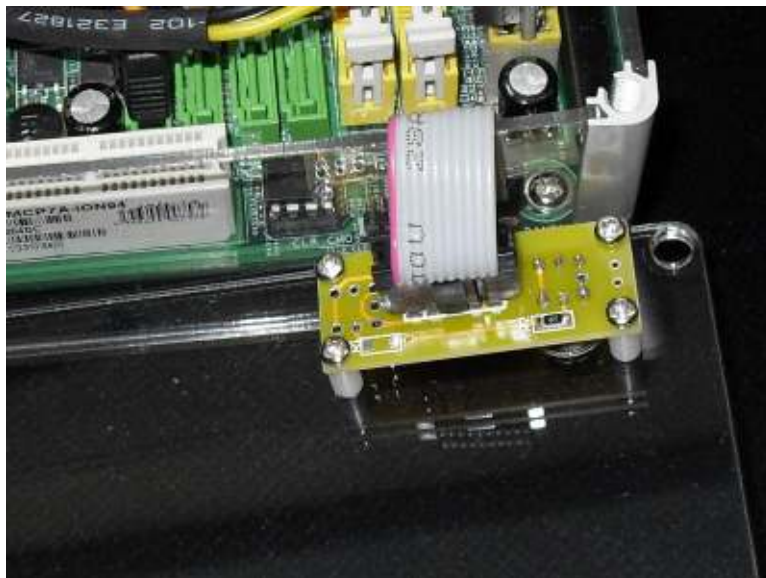
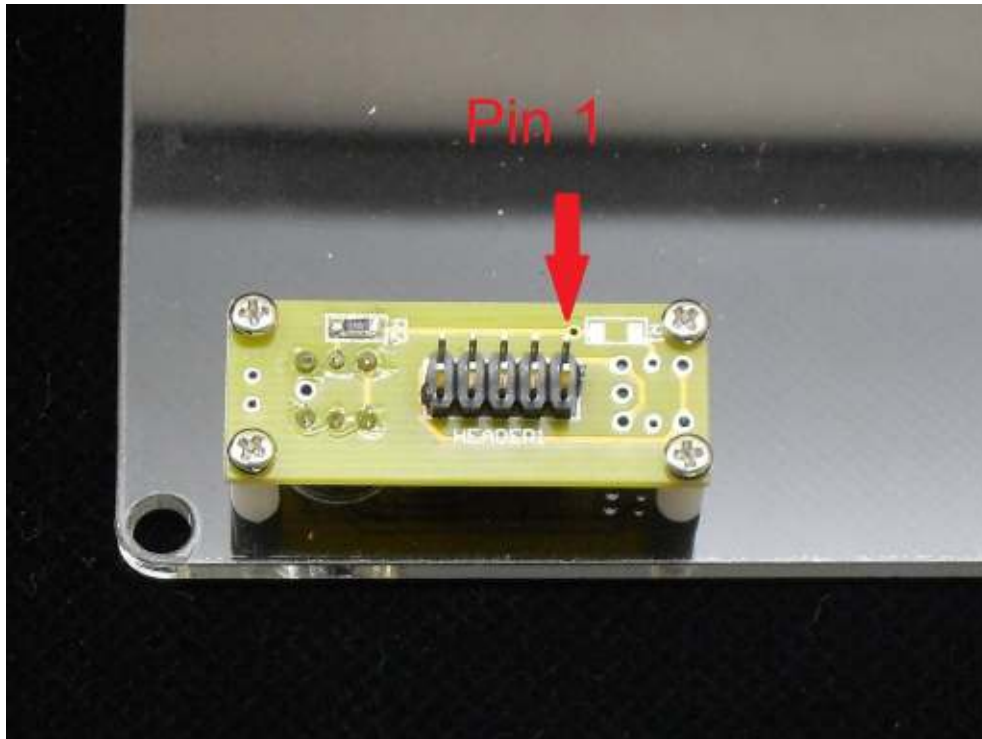
| Pin | Signal | Pin | Signal |
|-----|----------|-----|--------|
| 1 | HDD_LED+ | 6 | PWR_SW |
| 2 | PW_LED+ | 7 | RESET |
| 3 | HDD_LED- | 8 | GND |
| 4 | PW_LED- | 9 | NC |
| 5 | GND | 10 | KEY |



(Important! Red color of cable is pin 1)



2.10.2 Switches and indicators side





2.11 Installing the top crystal clear plate

