

Lcdmod Kit

I2004AB-M1

Perspex mini-ITX case

(Designed for Intel[®] Core[™] i3/5/7 Processor)

with

USB interface Big 20x4 LCD module

(White characters with blue background)

User Manual

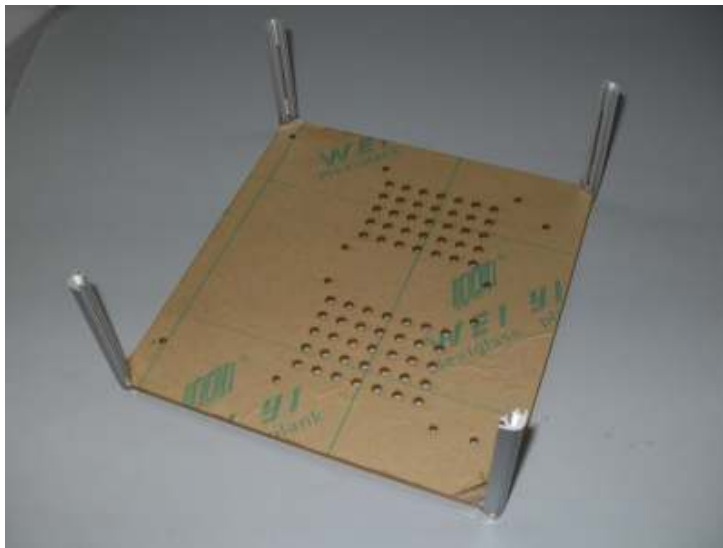
Website: <http://www.lcdmodkit.com>

Rev: 1.01 Mar 2011

Front Panel LCD	
Data Transfer	USB 1.1 compliant
LCD Resolution	20 Characters x 4 Lines
LCD color	White characters / blue background
Screen Size	123.5 x 43 mm
Work with	Lcd Smartie, lcd4linux and LCDProc
Operating System	Linux, Windows 98, XP, 7 32 & 64 bits
USB connection	Internal USB connector

Chapter 2 Hardware Setup

2.1 Installing corner stands to the bottom crystal clear plate



2.2 Installing hard disk to the bottom crystal clear plate

2.2.1 Place red fiber liners on mounting holes of hard disk



2.2.2 Place bottom crystal clear plate on the top of hard disk and install screws
(If you only use one hard drive, please cover the exhausted holes of the another drive bay)



2.3 Installing nylon studs on the bottom crystal clear plate



2.4 Installing rear panel



2.5 Connecting SATA data and power cables

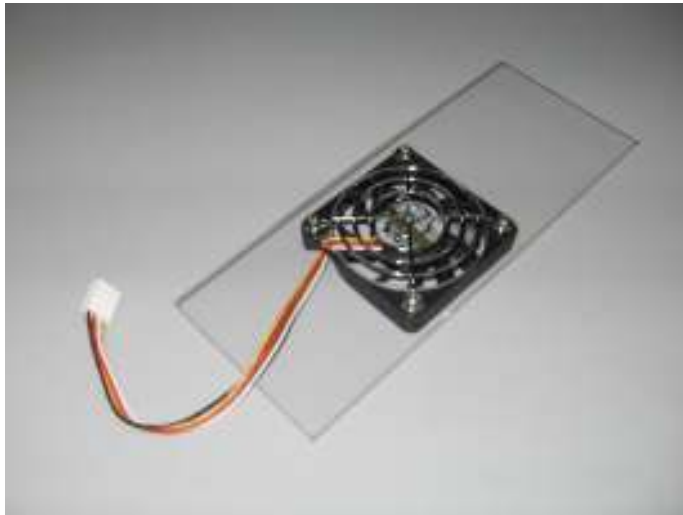


2.6 Installing Mainboard and power cable and Wifi connector (if you have)





2.7 Exhausted fan installation



2.8 Connecting ON/OFF switch cable to front panel

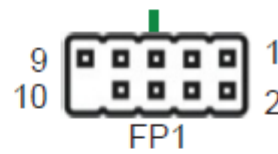


2.9 Main board side



FP1-Pin Definition

Pin	Signal	Pin	Signal
1	HDD_LED+	6	PWR_SW
2	PW_LED+	7	RESET
3	HDD_LED-	8	GND
4	PW_LED-	9	NC
5	GND	10	KEY



2.10 Connecting internal USB cable of front panel LCD to USB connector of motherboard

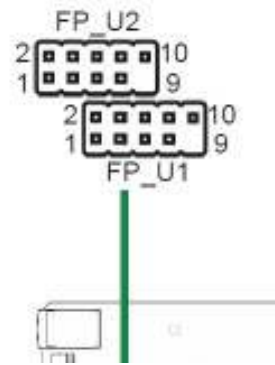




(D- = USBP*- , D+ = USBP*+)

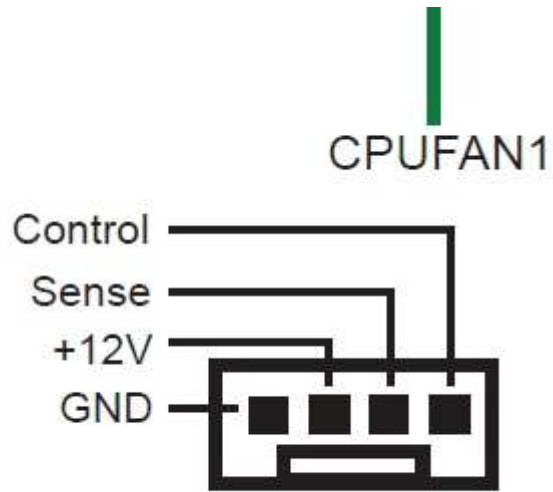
USB-Pin Definition

PIN	Assignment	PIN	Assignment
1	VCC	6	USBP1+
2	VCC	7	GND
3	USBP0-	8	GND
4	USBP1-	9	KEY
5	USBP0+	10	OC#



2.11 Connecting the 2-way PWM fan cable to CPU fan connector of motherboard





2.12 Connecting the 2-way PWM fan cable (4-cable one for detecting the CPU fan speed) to CPU fan



2.13 Connecting the 2-way PWM fan cable (3-cable one for controlling speed only) to exhaust fan



2.14 Installing the side and front panel



2.15 Installing the top panel



Chapter 3 Driver Installation

3.1 Power up message

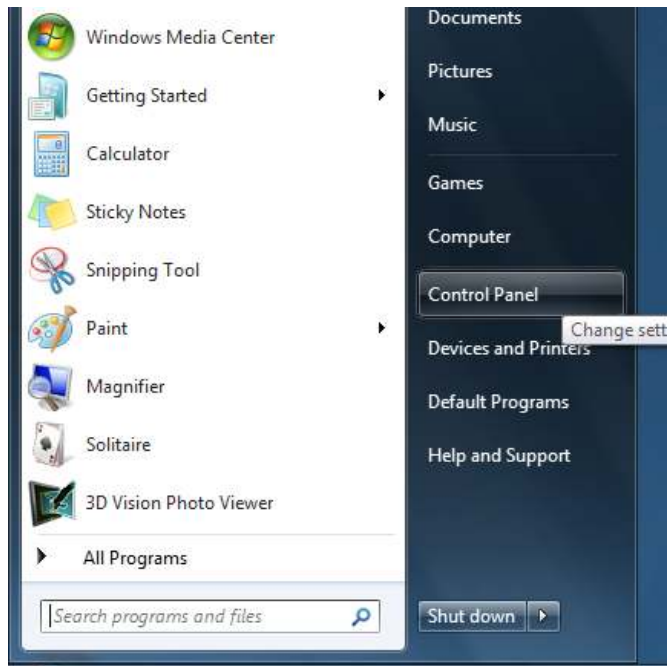


3.2 Error message may be shown on your screen



3.3 Copy the driver folder to any driver or desktop of your computer

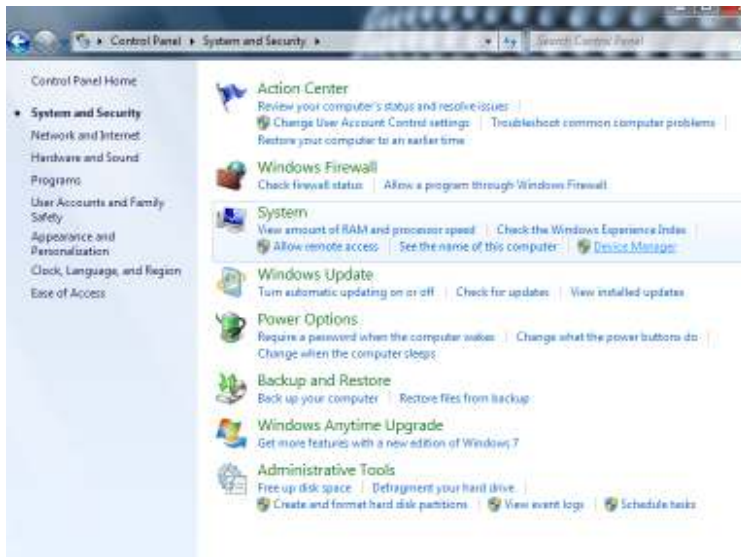
3.4 Go to “Control Panel”



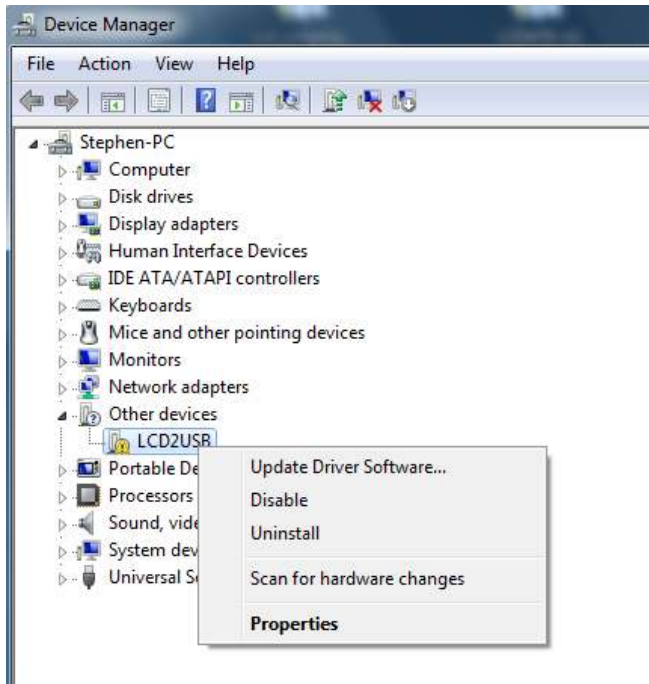
3.5 Go to “System and Security”



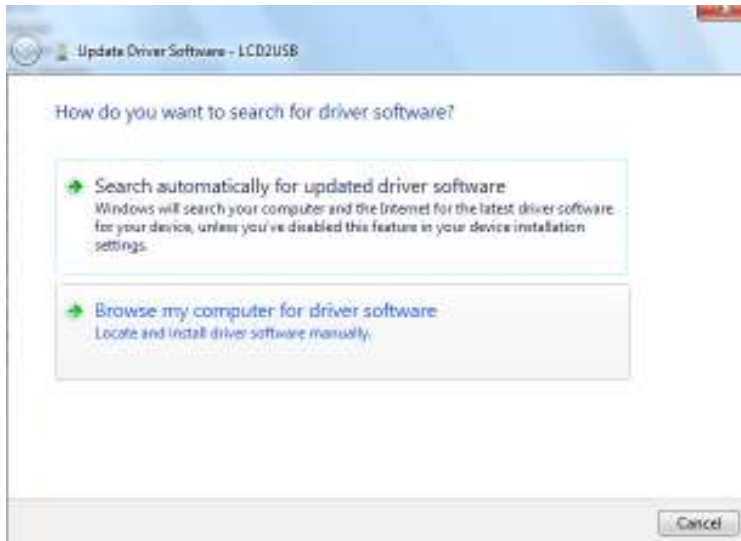
3.6 Go to “Device Manager”



3.7 “LCD2USB” with “!”, right click the mouse and “Update Driver Software”



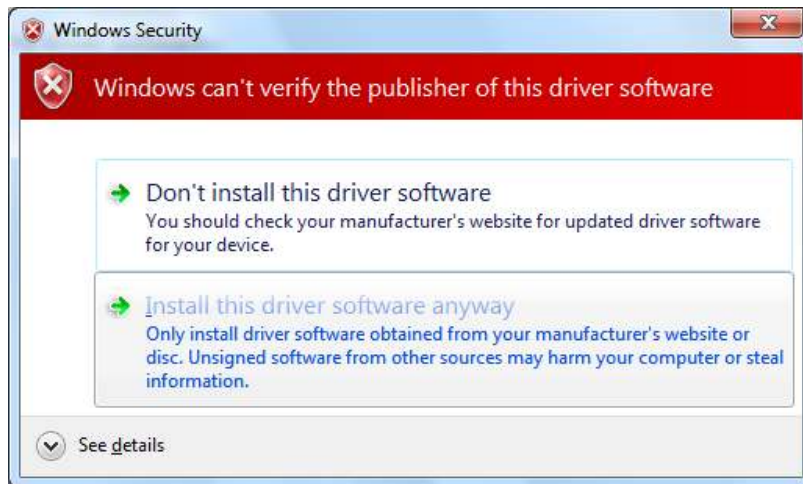
3.8 Choose “Browse my computer for driver software”



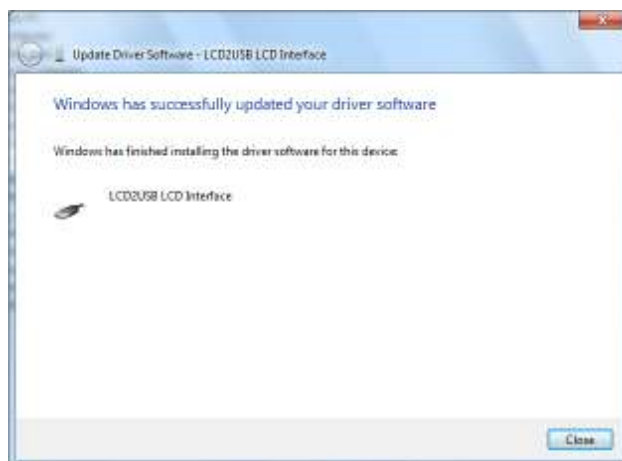
3.9 Find out the driver folder you copied before



3.10 Install this driver anyway



3.11 Close it



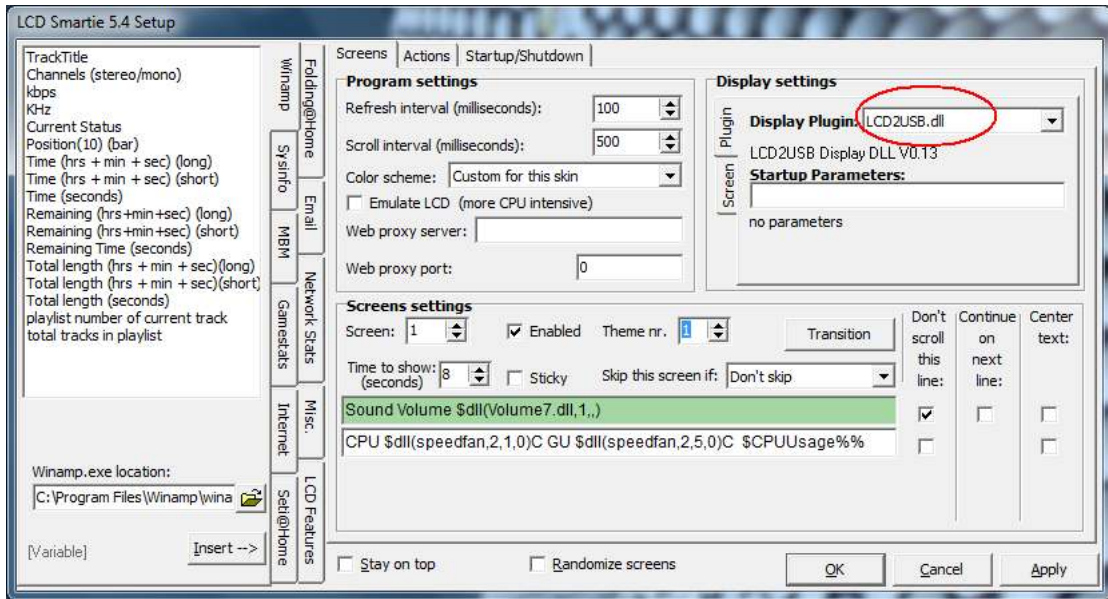
Chapter 4 Front Panel LCD Software Installation

4.1 Unzip the “lcd_smartie_v5.4” to any driver any folder you like.

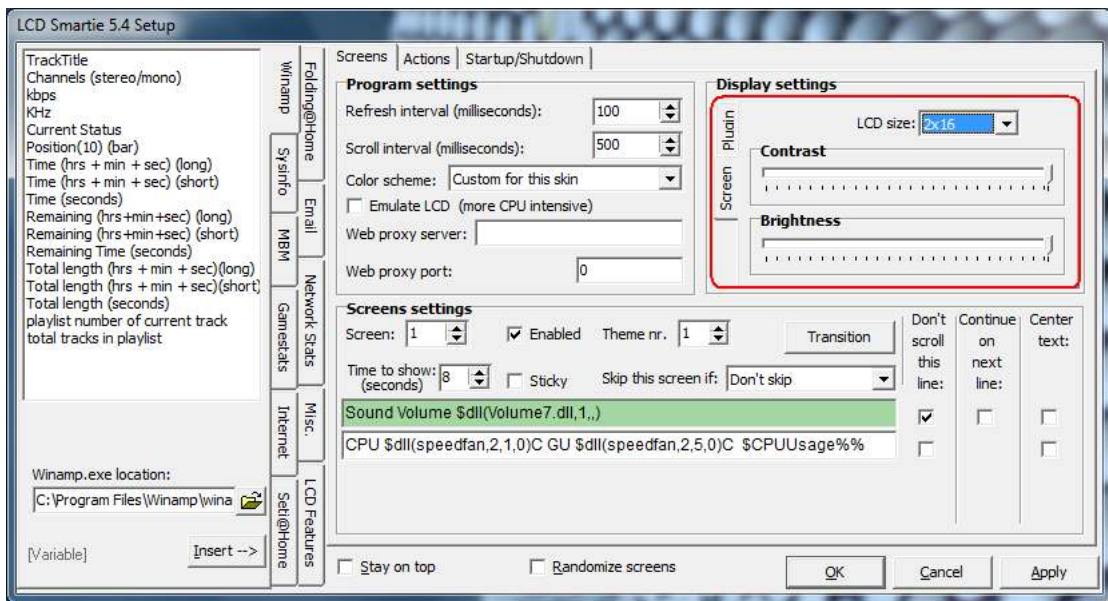
4.2 Run “LCDSmartie”



4.3 Set the display plugin to “LCD2USB.dll” in setup



4.4 Change the LCD size to “4x20” and tune the LCD contrast and brightness of backlight



Note: For more details about LCDSmartie, please go through the official site of LCDSmartie <http://lcdsmartie.sourceforge.net/>

Chapter 5 SpeedFan Software Installation

4.1 In your bios setting, choose “CPU Fan Speed Control” as [Smart]

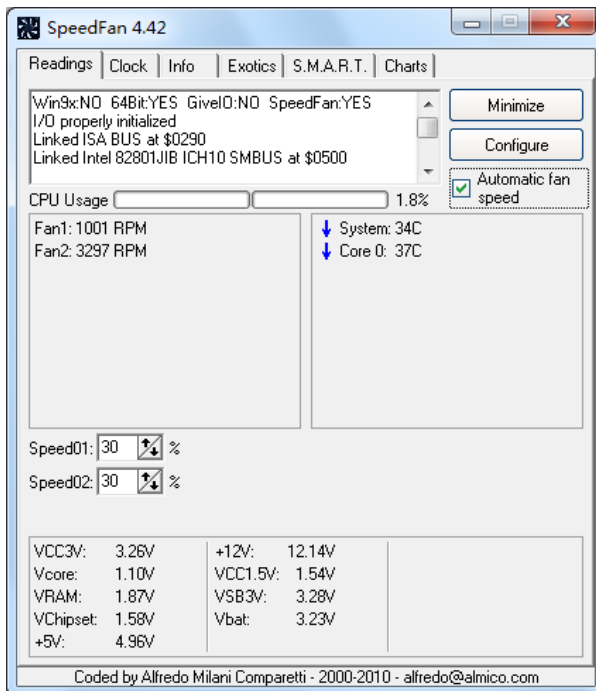


4.2 Install the “SpeedFan 4.42” to any driver any folder you like.

4.2 Run “SpeedFan”

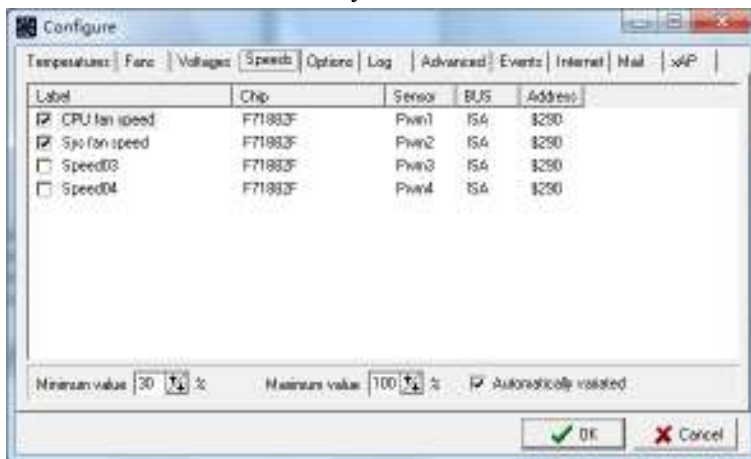


4.3 Choose “Automatic fan speed” and then click into “Configure”

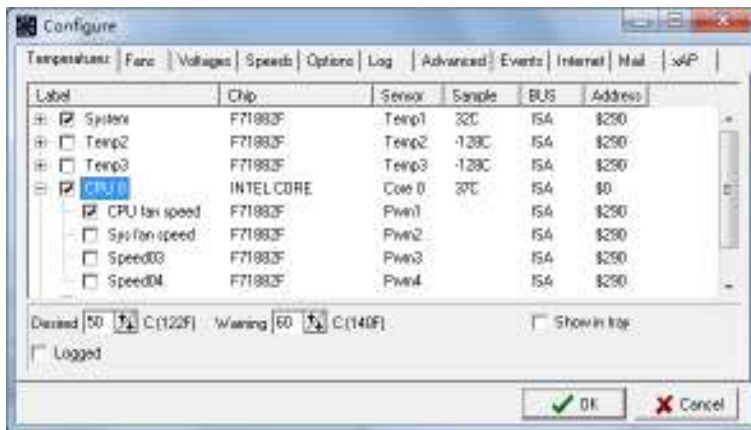


4.4 In “Speeds” page, choose the CPU and system fan and set their minimum value, maximum

value and chose “Automatically varied”



4.5 In “Temperature” page, choose the relationship between temperature and fan speed and desire/warning temperature of CPU and System



4.6 Copy the “SpeedFan” shortcut into the start up, then “SpeedFan ” will automatically running at each starting

With using our 2-way PWM control fan cable, both CPU and system fan speed can be controller by the computer bios/software. Your computer can be kept silent when general usage.

Note: For more details about SpeedFan, please go through the official site of SpeedFan <http://www.almico.com/speedfan.php>