



U204GMB-B1

USB interface LCD module

20 big characters x 4 lines

White characters with blue background

User Manual

Website: <http://www.lcdmodkit.com>

Rev: 1.01 Nov 2010

CHAPTER 1 INTRODUCTION.....	2
CHAPTER 2 HARDWARE SETUP	3
CHAPTER 3 DRIVER INSTALLATION	4
CHAPTER 4 SOFTWARE INSTALLATION	9

Chapter 1 Introduction

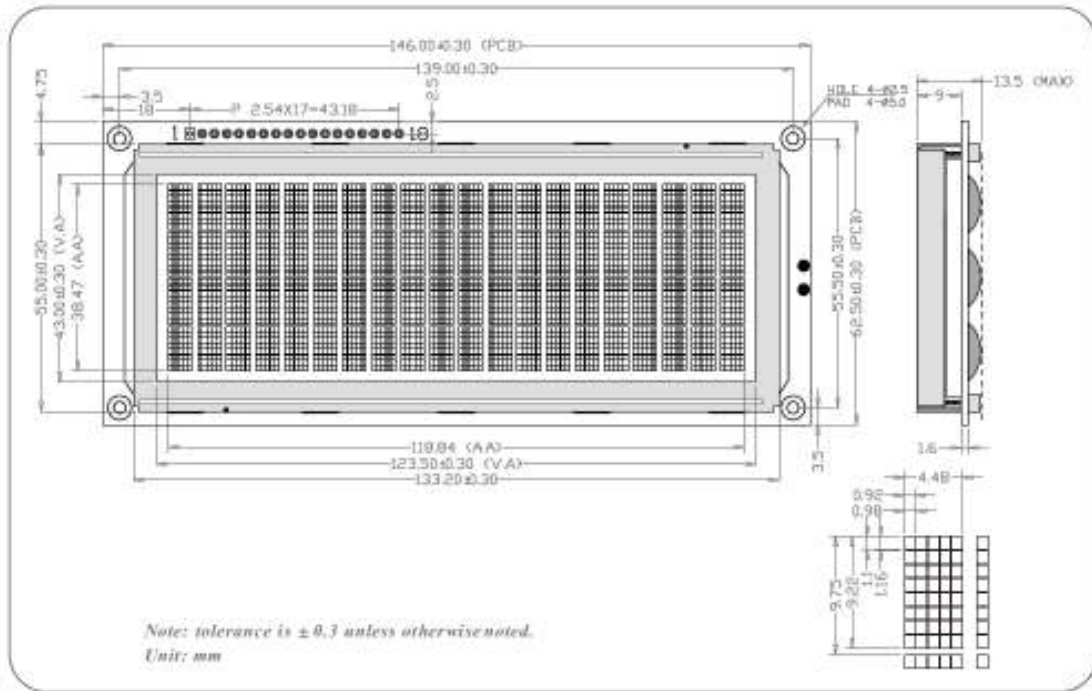
1.1 Package Contents



1.2 Specification

Data Transfer	USB 1.1 compliant
Driver	Lcd2usb compatible (without buttons)
LCD Resolution	20 Characters x 4 Lines
LCD color	White characters / blue background
Screen Size	123.5 x 43 mm
USB backplane	44x22x5.5mm / 3mm gap from LCD backplane
Work with	Lcd Smartie, lcd4linux and LCDProc
Operating System	Linux, Windows 98, XP, 7 32 & 64 bits
USB connection	Internal USB connector & mini USB

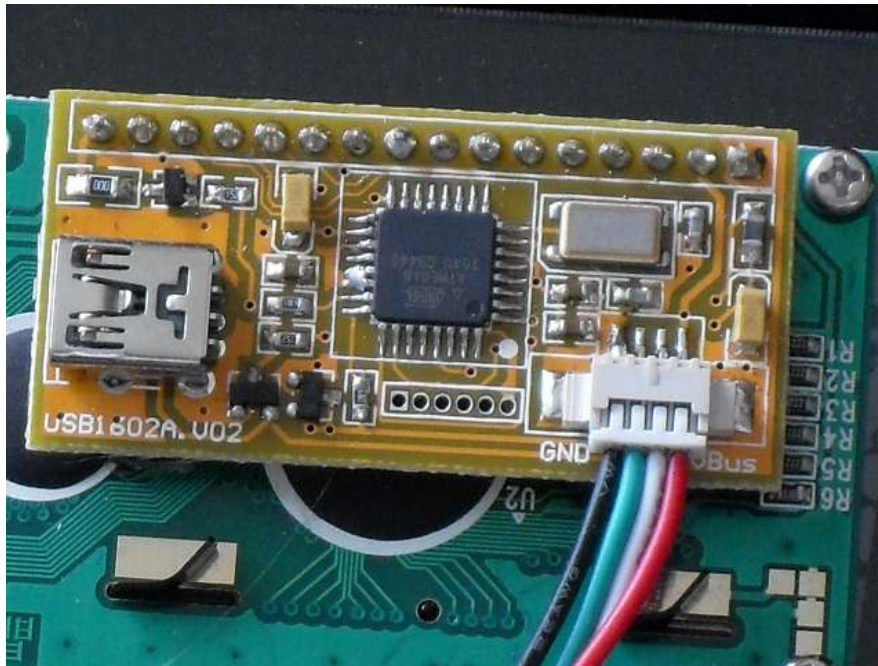
1.3 LCD module dimensions (USB backplane not shown in the drawing)



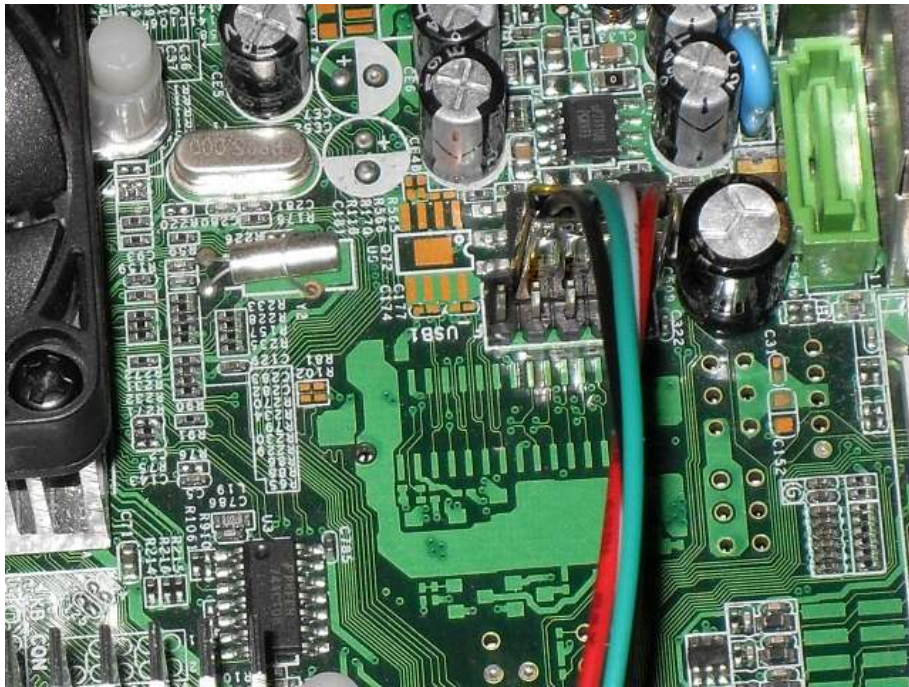
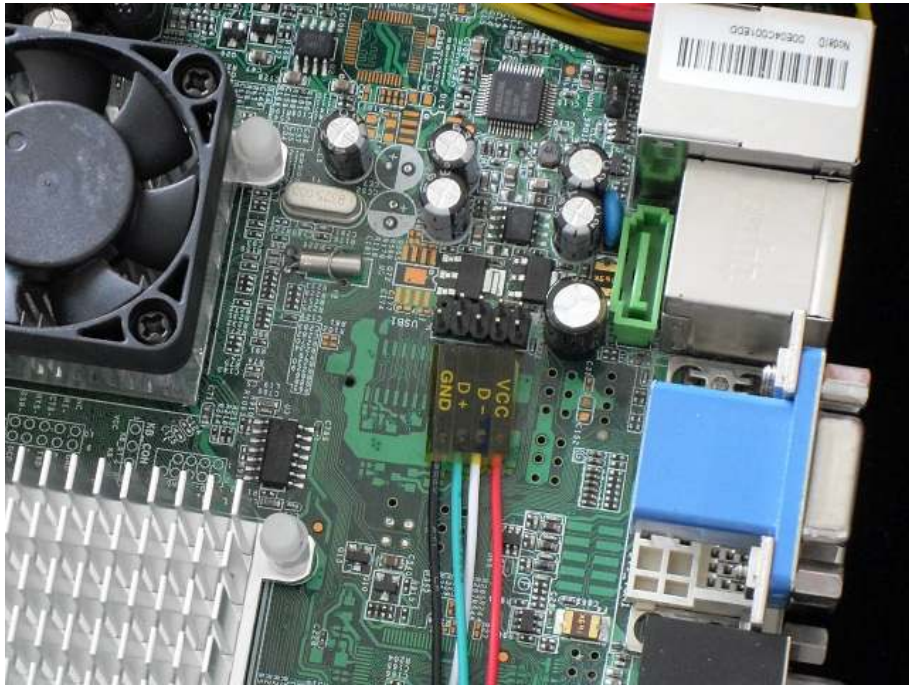
Chapter 2 Hardware Setup

2.1 Connecting internal USB cable

2.1.1 USB LCD module side



2.1.2 Main board USB port header side



Chapter 3 Driver Installation

3.1 Power up message

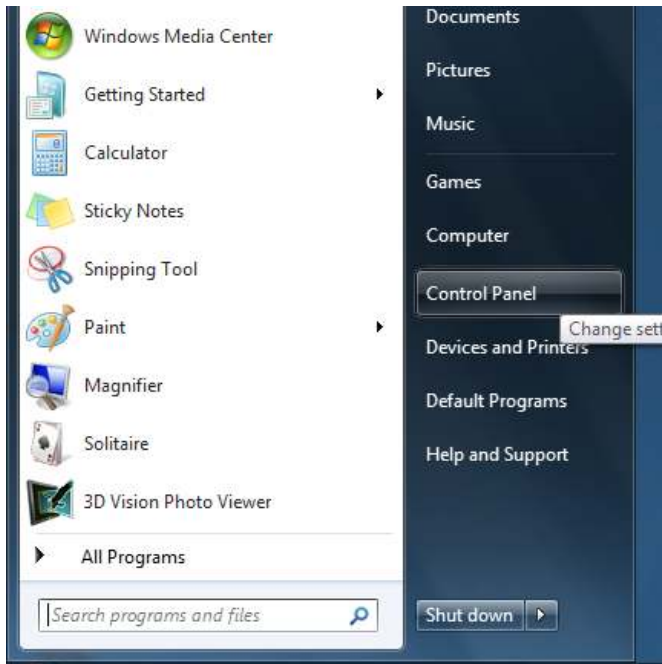


3.2 Error message may be shown on your screen



3.3 Copy the driver folder to any driver or desktop of your computer

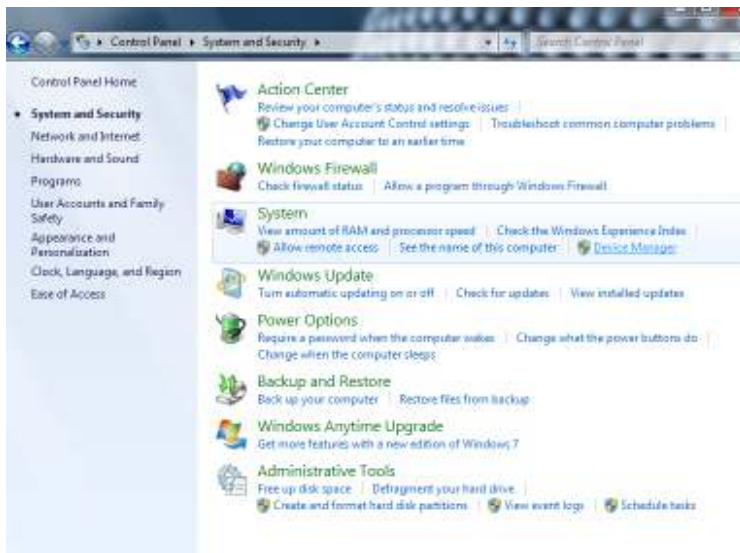
3.4 Go to “Control Panel”



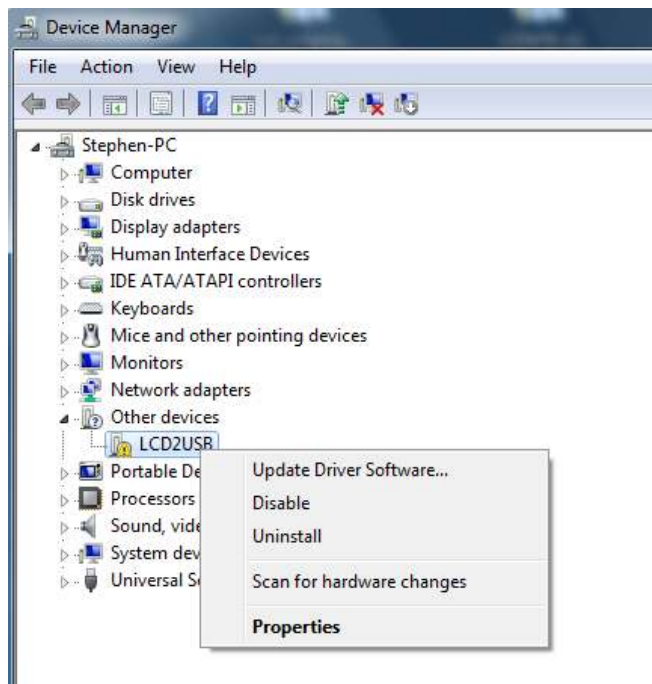
3.5 Go to “System and Security”



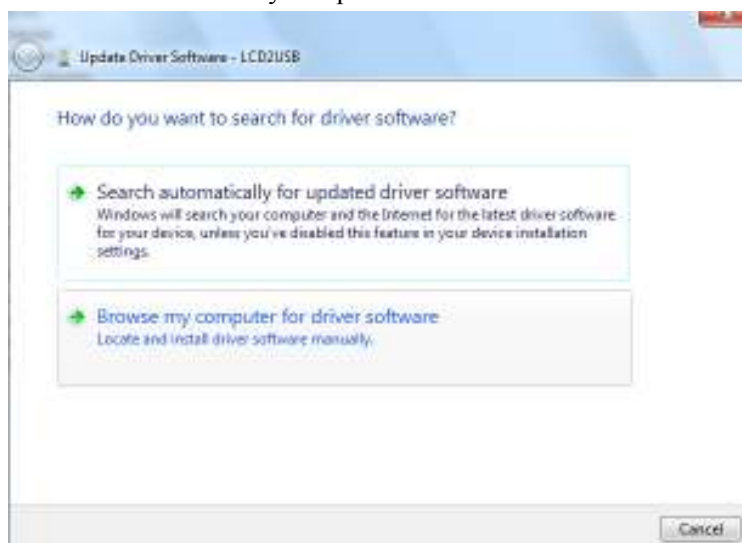
3.6 Go to “Device Manager”



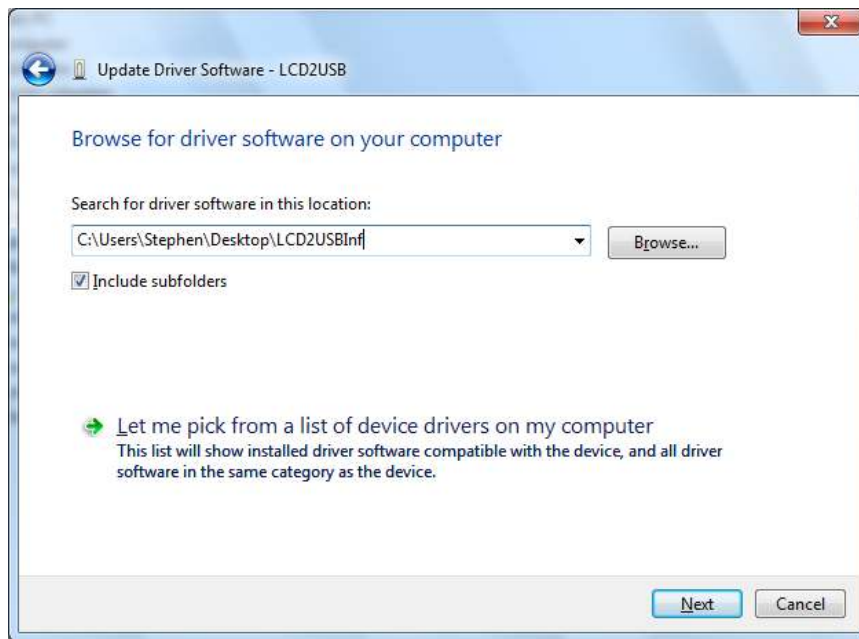
3.7 “LCD2USB” with “!”, right click the mouse and “Update Driver Software”



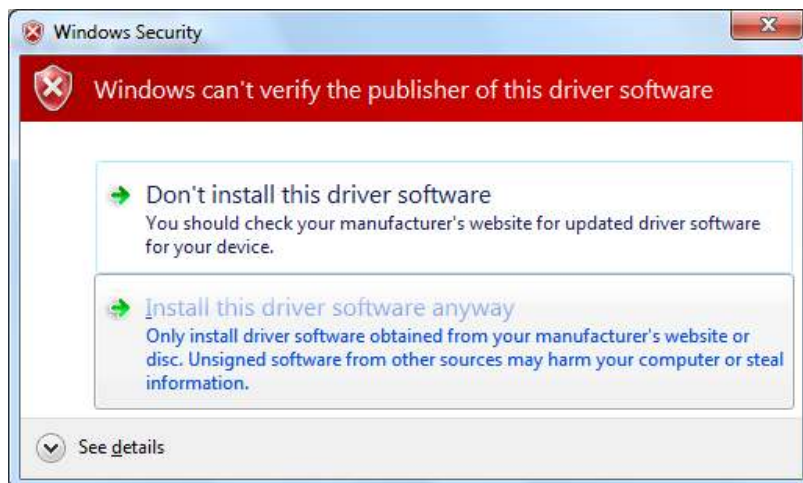
3.8 Choose “Browse my computer for driver software”



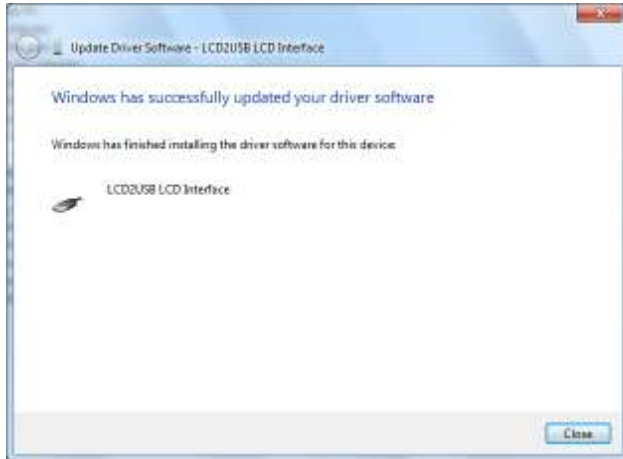
3.9 Find out the driver folder you copied before



3.10 Install this driver anyway



3.11 Close it



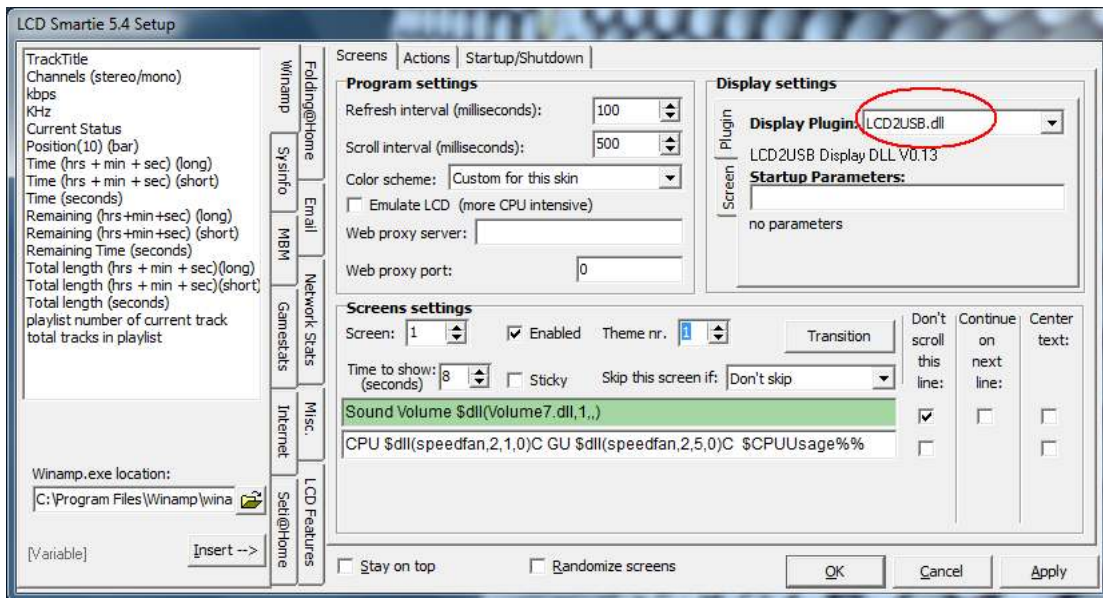
Chapter 4 Software Installation

4.1 Unzip the “lcd_smartie_v5.4” to any driver any folder you like.

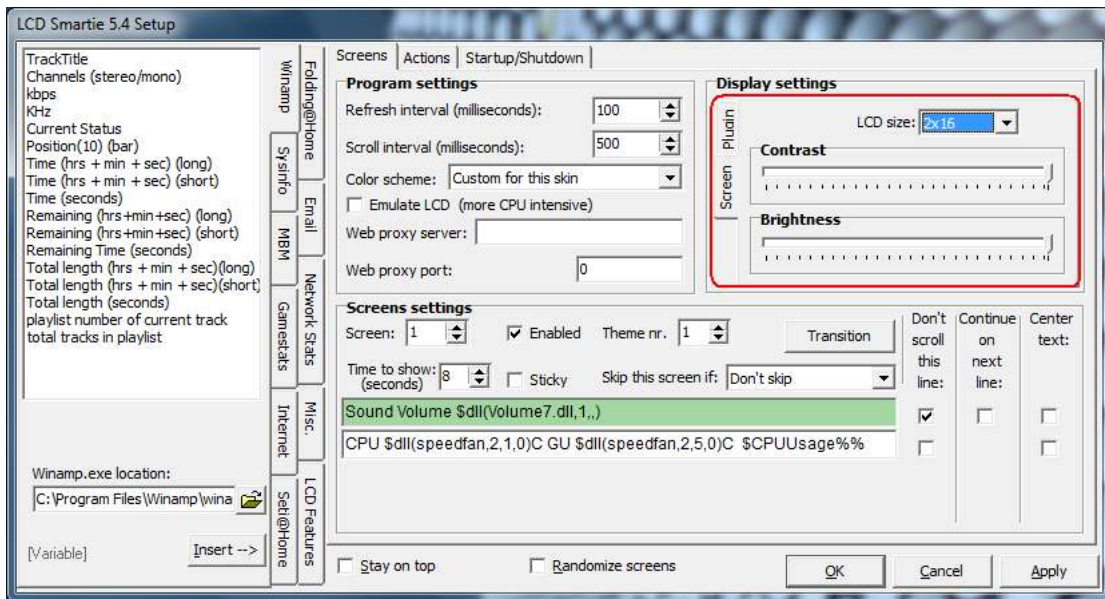
4.2 Run “LCDSmartie”



4.3 Set the display plugin to “LCD2USB.dll” in setup



4.4 Change the LCD size to “2x16” and tune the LCD contrast and brightness of backlight



Note: For more details about LCDSmartie, please go through the official site of LCDSmartie <http://lcdsmartie.sourceforge.net/>

